

ISS	REVISED BY:	REVISION DATE	ECO #

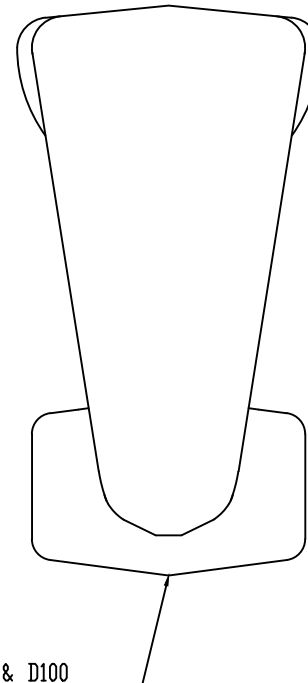
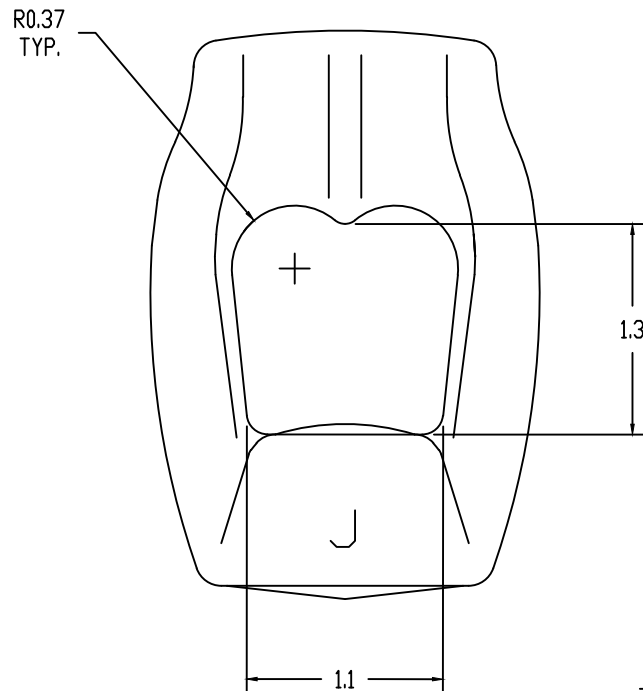
NOTES:

MATERIAL:
HOT ROLLED CARBON STEEL, 36 KSI YIELD

FINISH:
HOT DIP GALVANIZED PER ASTM A153

DIMENSIONS: INCHES

MECHANICAL RATING:
ULTIMATE TENSILE STRENGTH: 36 KIPS



TAPPED TO FIT D75 & D100
POWER HUB RODS

This drawing contains confidential information that is the property of MacLean Power, L.L.C. ("MacLean"). Use of MacLean's confidential information without MacLean's express written consent is strictly prohibited and may expose you to legal liability. If you believe that you received this material in error, please destroy it or return it to MacLean Power, L.L.C., Kingsley Park Five, 481 Munn Rd. Suite 300, Fort Mill, SC 29715, USA.



WWW.MACLEANPOWER.COM

CATALOG NUMBER:		D6562A	
SHEET NAME: Sheet1		1 OF 1	
DRAWING DESCRIPTION:			
DOUBLE EYENUT			
DRAWN BY:	DH	DATE:	09/19/19
APPRV'D:		DR	